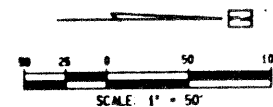


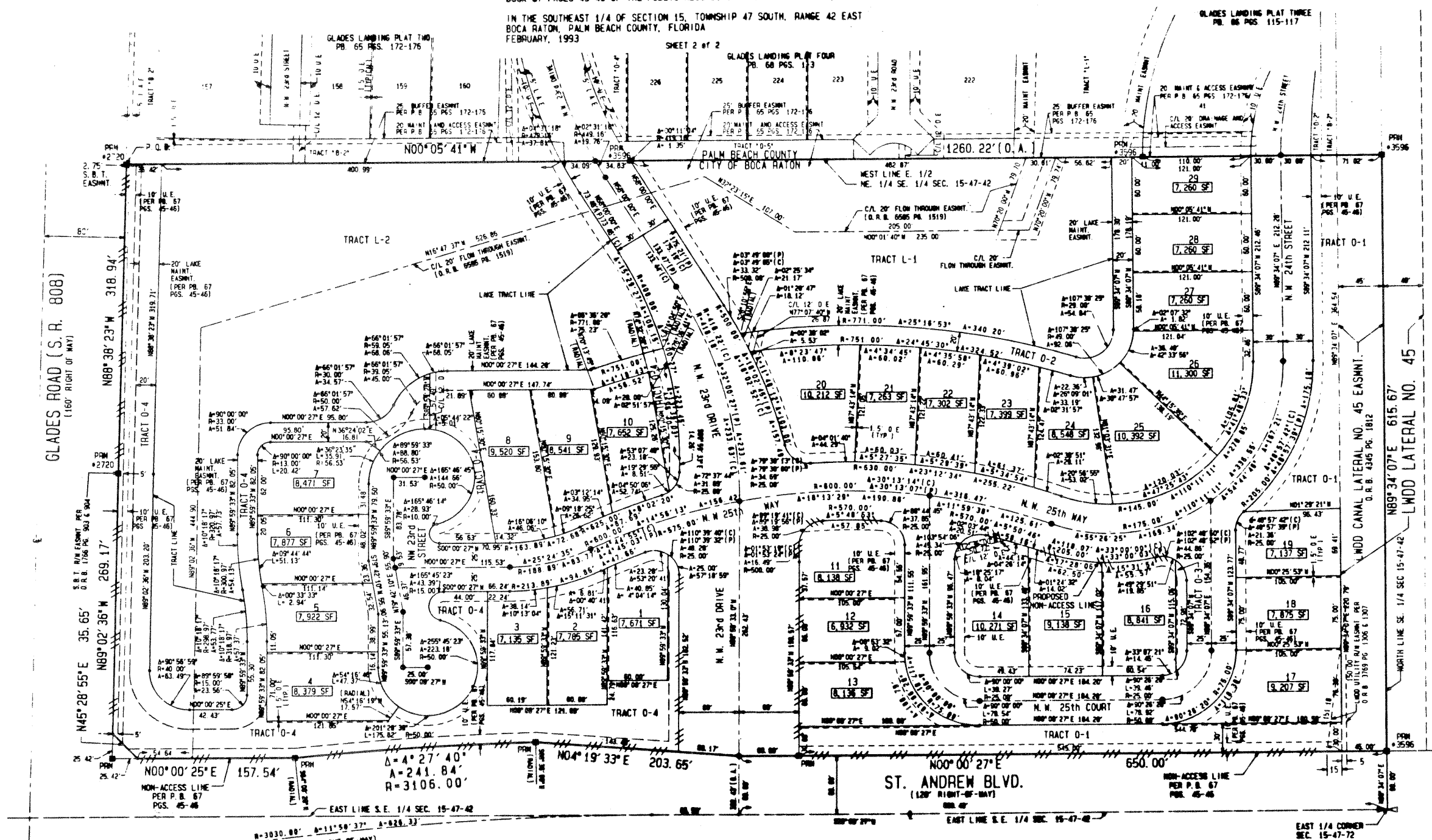
# A REPLAT OF SANTA BARBARA A PLANNED UNIT DEVELOPMENT

103  
70 103



BEING A REPLAT OF A PORTION OF SANTA BARBARA AS RECORDED IN PLAT  
BOOK 67 PAGES 45-46 OF THE PUBLIC RECORDS OF PALM BEACH COUNTY, FLORIDA

IN THE SOUTHEAST 1/4 OF SECTION 15, TOWNSHIP 47 SOUTH, RANGE 42 EAST  
BOCA RATON, PALM BEACH COUNTY, FLORIDA  
FEBRUARY, 1993



GLADES LANDING PLAT THREE  
PB. 66 PGS. 115-117

SHEET 2 of 2

GLADES LANDING PLAT FOUR  
PB. 68 PGS. 113

GLADES ROAD (S. R. 808)  
(160' RIGHT OF WAY)

N45° 28' 55" E 35.65'  
N89° 02' 36" W 269.17'

N00° 00' 25" E 157.54'

NON-ACCESS LINE  
PER P.B. 67  
PGS. 45-46

N-3030.00' A-111° 58' 37" A-828.33'

(120' RIGHT-OF-WAY)

EAST LINE S.E. 1/4 SEC. 15-47-42

Δ-A=27° 40'  
A=241.84'  
R=3106.00'

N04° 19' 33" E 203.65'

N00° 00' 27" E

ST. ANDREW BLVD.  
(120' RIGHT-OF-WAY)

650.00'

NON-ACCESS LINE  
PER P.B. 67  
PGS. 45-46

EAST LINE S.E. 1/4 SEC. 15-47-42

EAST 1/4 CORNER  
SEC. 15-47-72

N89° 34' 07" E 615.67'  
LWDD LATERAL NO. 45

LWDD CANAL LATERAL NO. 45 EASMT.  
O.R.B. 4346 PG. 1812

NORTH LINE S.E. 1/4 SEC. 15-47-42

11850

**METRIC ENGINEERING**  
CONSULTING ENGINEERS - PLANNERS - SURVEYORS  
1000 WEST PALM BEACH BLVD., SUITE 400  
PALM BEACH, FLORIDA 33480  
PHONE: (561) 835-1111 FAX: (561) 835-1112

ON1  
NS  
D16

A REPLAT OF SANTA BARBARA